

Pronto 1 dual audiocodec for voice transmission

Pronto 2 audiocodec G711 + G722 + ISO MPEG Layer II

Prodys has developed a new generation of high performance audio codecs for ISDN lines. Careful design has greatly simplified their ease of use by operators and technicians alike when compared to other products currently available, even allowing remote control from a PC. The Pronto1 and Pronto2 models meet the requirements of the broadcast world since they implement the most widely-used compression modes, in both mono and stereo.



Pronto1

The Pronto1 is a new concept in audio codecs that, in a single unit, satisfies all the voice transmission requirements of a radio station. It implements the G711 standard for basic telephone quality (3.4 KHz) and the G722 standard higher quality (7.5 KHz). Its communications interface (terminal adapter or TA) allows direct connection to ISDN(SO interface) with the ability to use both B channels (64 Kbps) independently and simultaneously with any combination.

In G711 mode, the Pronto1 ISDN provides an alternative to normal telephone hybrids, by allowing standard voice communications on both the ISDN network and analogue telephone networks. A conventional analogue telephone connected to the front panel, allows calls to be made or received, transferred and put on

hold or on air in the same way as conventional telephone hybrids.

When G722 mode is selected, the unit permits high quality voice communications via the ISDN network, with an advantage over other audio encoding systems of having a low coding delay.

Pronto2

Designed for those users who demand higher quality in their ISDN connections. While maintaining the performance of the Pronto1, it adds the two ISO MPEG Layer II compression modes most widely-used in broadcasting: MONO 64 Kbps (10.5 KHz) and JOINT STEREO 128 Kbps (20KHz), the latter with the J52 standard for transmission using two independent 64 Kbps channels. It also includes a digital audio AES/EBU input and output on XLR as standard and a connector for transmitting and receiving

auxiliary data simultaneously with the MPEG audio. It is also possible to replace the ISDN communications interface (TA) with two X21 ports, expanding the possibilities of connecting the equipment to other digital communication networks (dedicated networks, satellite communications etc.)

EXTERNAL TELEPHONE

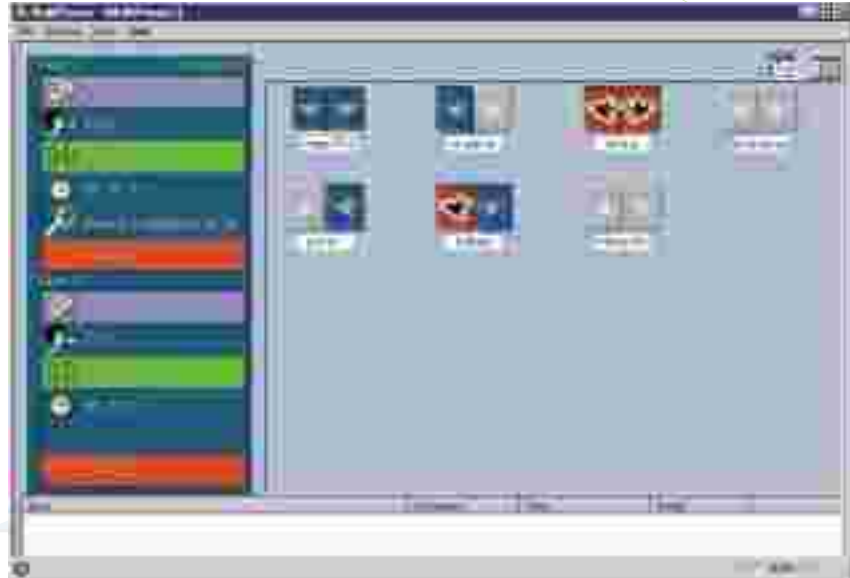
The Prontos also feature the ability, accessed through a simple front panel menu, to remote control the unit with a standard analog telephone (connected to the RJ11 socket on the front panel) using the DTMF (multifrequency) tones generated by the dial pad. The same telephone can also replace an audio I/O channel in G711/G722 modes to act, for example, as a talkback system.

Multi Pronto

Pronto codecs control software

MultiPronto

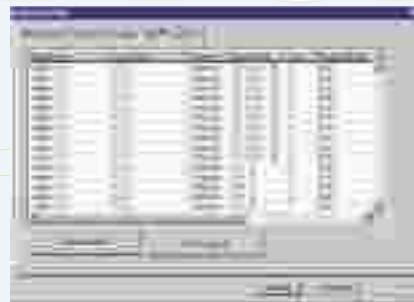
- MULTIPRONGO is software that can simultaneously control up to 256 Pronto audio-codecs.
- Its Client-Server structure allows control of these Prontos from any PC connected to the LAN.
- MULTIPRONGO logs all calls, sent or received, storing duration, mode, date, time, etc., information for later analysis.



AUDIO MODES

You can change as you wish the audio mode just by clicking a button:

- G711
- G722
- MPEG 64 MONO 48 / 24kHz
- MPEG 128 J52 JS
- MPEG 128 TELOS JS
- MPEG 128 CCS JS



LOG FILE

The log file screen shows us the registration of all calls, with the additional information.

DIAL

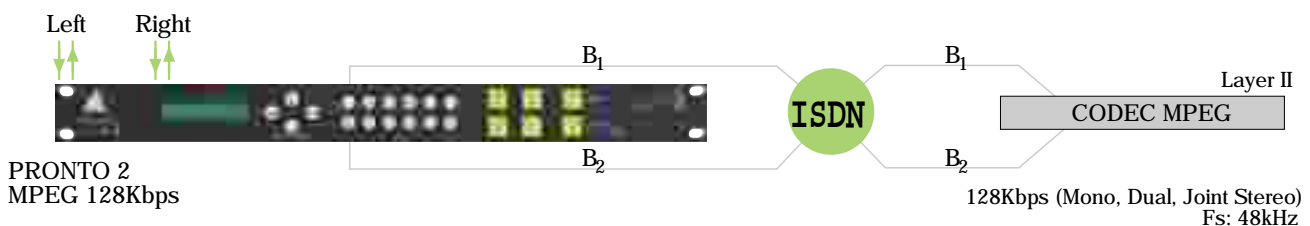
To phone, just enter the number, press a "hot key" (most common telephone numbers), or go to the phone book.



PHONE BOOK

You can storage here the telephone numbers of the companies you work with, as well as the audio mode required for each communication.

Applications



Specifications

Pronto1 & Pronto2 & Pronto3

	PRONTO 1	PRONTO 2	PRONTO 3
ANALOG AUDIO			
• Inputs/Outputs	2 independent electronically-balanced channels	2 independent electronically-balanced channels	2 independent electronically-balanced channels
• Connectors	XLR	XLR	XLR
• Nominal Output Level	+0, +4, or +6dBu (configurable)	+0, +4, or +6dBu (configurable)	+0, +4, or +6dBu (configurable)
• Converters	A/D and D/A 20 bits	A/D and D/A 20 bits	A/D and D/A 24 bits
• Saturation Level	+18dBu	+18dBu	+22dBu
COMPRESSION ALGORITHMS			
	G711	G711, G722 and ISO MPEG Layer II (ISO 11172-3)	G711, G722 and ISO MPEG Layer II & ISO MPEG Layer III (ISO 11172-3)
	G722 (statistical f. and H221/H242)	Modes: Mono, Dual, Joint Stereo Bit Rates: 64, 128 Fs: 48 (24k available in 64Kbps)	Modes: Mono, Dual, Joint Stereo Bit Rates: 64, 128 Fs: 48 (24k available in 64Kbps)
DIGITAL AUDIO			
• Interface	-	AES/EBU	AES/EBU with optional clock input selectable from menu
• Connector	-	DB9	DB9
COMMUNIC. INTERFACE			
	Universal ISDN Terminal adapter (2B+D). ISDN Protocols: EISDN, AT&T 5ESS, DMS 100, NT1 X21 port	Universal ISDN Terminal adapter (2B+D). ISDN Protocols: EISDN, AT&T 5ESS, DMS 100, NT1 X21 port	Universal ISDN Terminal adapter (2B+D). ISDN Protocols: EISDN, AT&T 5ESS, DMS 100, NT1 X21 port
REMOTE CONTROL			
• Connector	DB15 to control the device from a standard PC or from a dedicated remote terminal	DB15 to control the device from a standard PC or from a dedicated remote terminal	DB15 to control the device from a standard PC or from a dedicated remote terminal
FRONT PANNEL			
• Display	LCD 16x2 characters	LCD 16x2 characters	LCD 16x2 characters
• Keyboard	standard to control the menu	standard to control the menu	standard to control the menu
• Direct Access Keys	Dialling, call ending, and call transferring to "air" when used as a telephone hybrid	Dialling, call ending, and call transferring to "air" when used as a telephone hybrid	Dialling, call ending, and call transferring to "air" when used as a telephone hybrid
• Connector	RJ11 for a standard telephone	RJ11 for a standard telephone	RJ11 for a standard telephone
AUXILIARY DATA PORT			
• Auxiliary data channel	-	Auxiliary data channel to use in MPEG mode	Auxiliary data channel to use in MPEG mode
• Bit rate	-	300 or 9600	300 or 9600
• Connector	-	DB9 connector	DB9 connector
POWER SUPPLY			
	94-250 VAC 50/60Hz 30W	94-250 VAC 50/60Hz 30W	94-250 VAC 50/60Hz 30W
DIMENSIONS			
• Height	1U (4,44cm)	1U (4,44cm)	1U (4,44cm)
• Width	19" rack (48,26cm)	19" rack (48,26cm)	19" rack (48,26cm)
• Depth	30cm	30cm	30cm
• Weight	3Kg approximately	3Kg approximately	3Kg approximately